

AT&T Internet Air for Enterprise and IoT

Fast, reliable and secure internet connectivity with a simple customer management platform

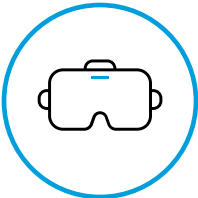
Let's talk IoT

- What is key to your **digital transformation plan?** What about IoT specifically?
- Where do you wish you had **more insight or data?**
- What is the **most time consuming** or error prone part of your operation?
- How often are you **relying on manual or legacy processes?**
- What are your **sustainability goals?**



IoT use cases just keep growing

Customers are using IoT to...



VR / AR and wearables

Visualize and interact with complex problems



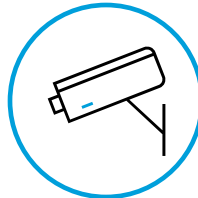
Fleet management

Location, vehicle health, driver behavior



RPM and telehealth

Real-time patient health insight



Video intelligence

Understand user experience & boost security



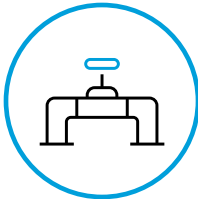
Connected car

Autonomous driving & mobile hotspot capabilities



Financial services

Digital signage, ATM connectivity, WAN failover



Utilities and public works

Report usage remotely & track servicing



Asset management

Asset utilization, cargo capacity & status



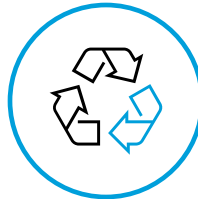
Retail operations

Mobile point-of-sale & inventory management



Manufacturing / industrial

Machine performance data, alerts



Sustainable business

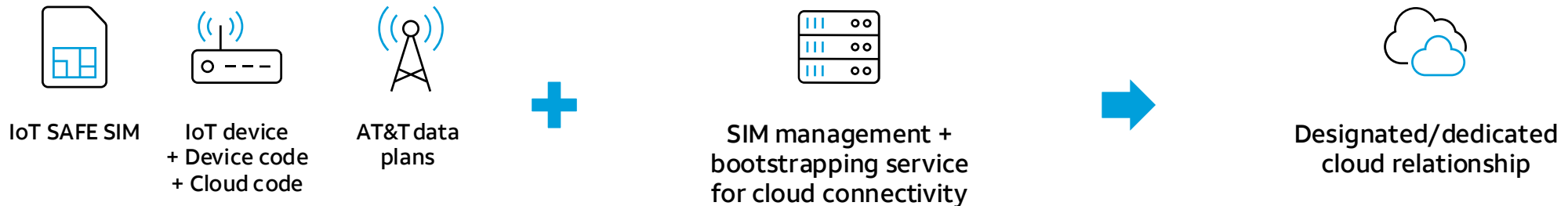
Intelligently deploy resources to reduce waste

Where will you take IoT next?

Easy, secure cloud connectivity

Designed with your workflow in mind

Securely deploy IoT applications directly to the cloud with lower costs and faster roll-out with capabilities specifically built for IoT



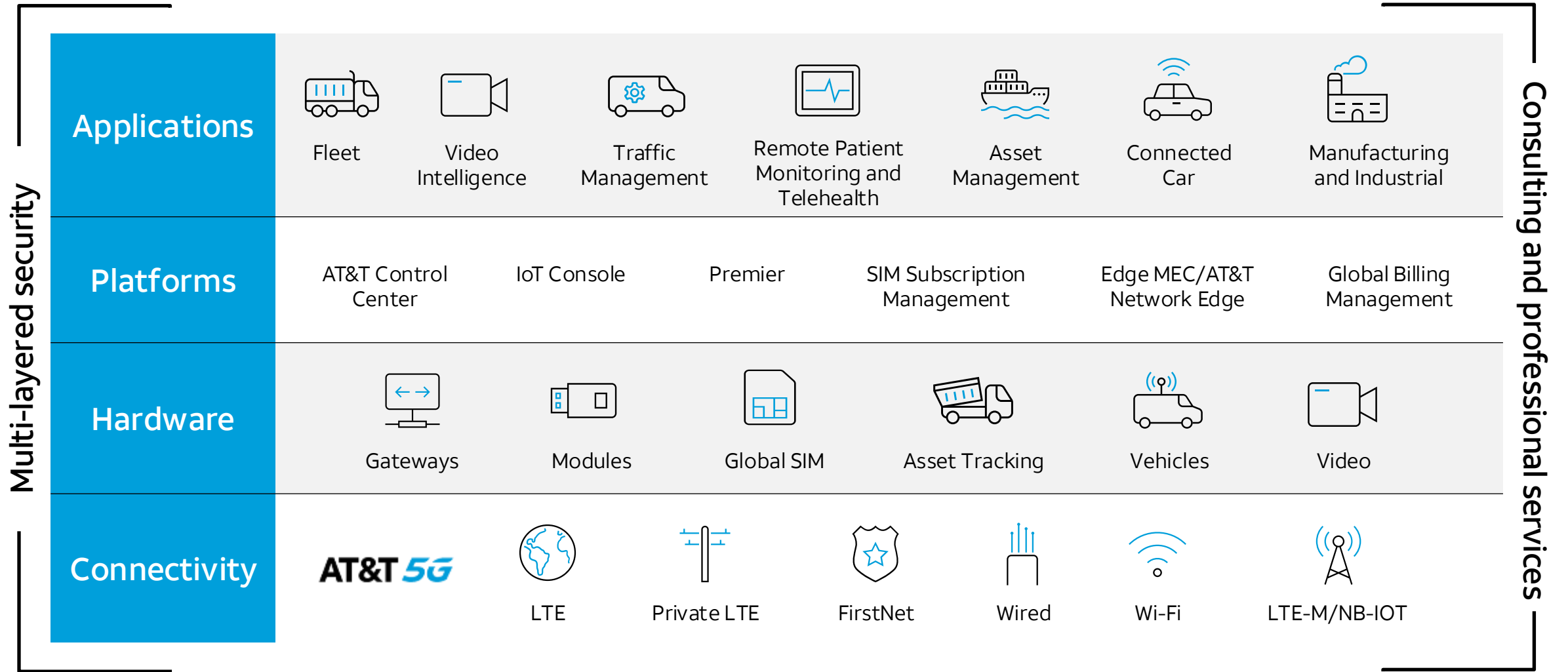
How it works

- Zero touch provisioning using cloud bootstrap template provides a blueprint for SIM to automatically connect and provision from device to cloud
- Industry GSMA standard based solution – SIM acts as the “root of trust”
- Cloud provisioning credentials are embedded on SAFE SIM during manufacturing

How it helps

- Ease device provisioning on public and private clouds to simplify IoT supply chain and accelerate adoption
- Conduct massive provisioning of IoT end-point devices at one time and eliminate costly manual processes
- SAFE SIM lowers overall hardware costs and allows plug and play secure connectivity to cloud

AT&T IoT portfolio



AT&T IoT Control Center makes it all work

Your core platform to simply, automatically, and securely manage your IoT services, with all the tools you need to launch, scale, and manage IoT devices worldwide.

Cost management

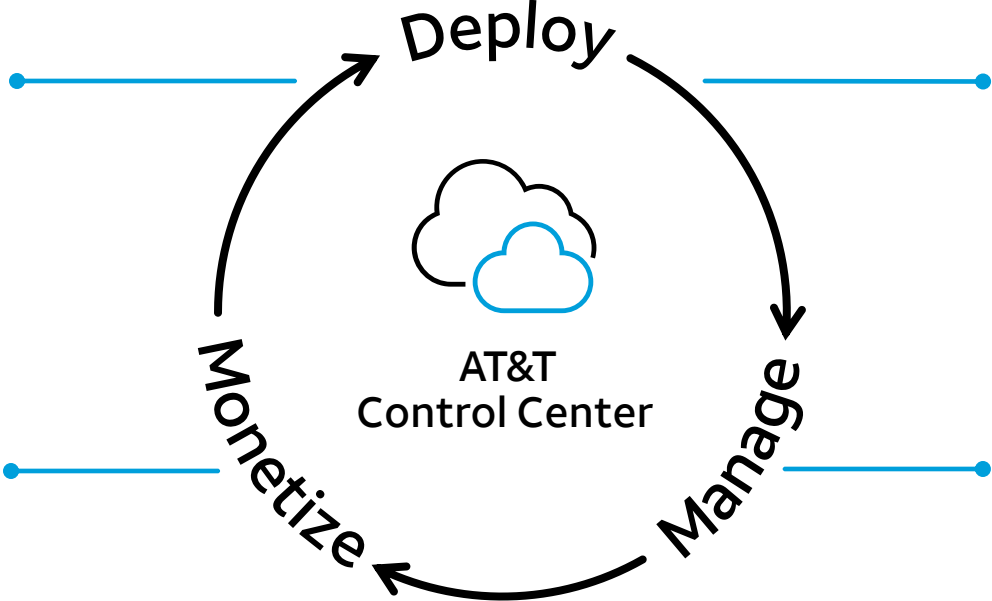
Track activity and gain insights in near-real time to automate cost management and data utilization across devices

Rich API library

Enables easy integration with your systems using standards-based APIs and rules-driven push APIs

Multi-layered IoT security

Identify issues and help safeguard your data, devices, and IT systems



SIM provisioning

Quickly configure to support unique business processes and models. Be up and running in days with just a few clicks

Near-real-time visibility

See all devices at a glance and respond immediately to changing network / usage conditions

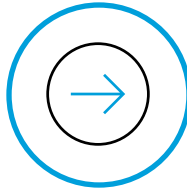
Near-real-time diagnostics

Identify and respond to unusual device behavior before it becomes a problem. Lower MTTR with self-help trouble-shooting tools



A set of data science solutions built for IoT including **Artificial Intelligence** and **Machine Learning**. Enables businesses to get insights faster from their IoT data to proactively solve business challenges.

AT&T IoT Enabled Analytics



Custom insights

Helps accelerate results, reduce implementation complexity, and get actionable insights faster by using pre-built models, libraries, and Packaged Insights designed specifically for IoT.



Advanced data expertise

Utilizes leading data expertise to extract actionable insights from various forms of information and enrich IoT data by combining it with other internal external sources.



End-to-end visibility

Transforms manual processes into automated ones. Employees receive the insights and actions they need to take right within the business applications they currently use.

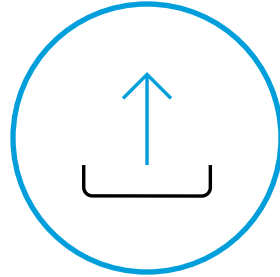
IoT Professional Services

Offering a full suite of services and integrated solutions



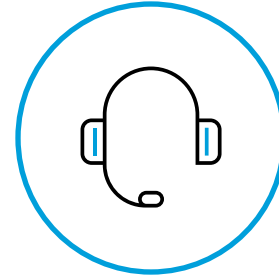
Consult

- Strategic roadmap, business case
- Project management
- Software architecture
- Design services
- Global device certification
- Proof of concept



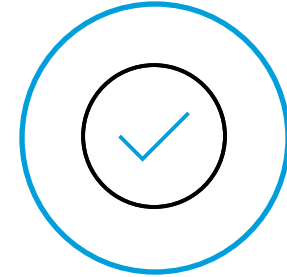
Deploy

- Stage, configure, kit, deliver and install
- Application development
- Firmware over-the-air through LWM2M
- Custom integration
- Globalization



Manage

- Enhanced support services
- Priority care
- End client billing
- Application management
- IoT security

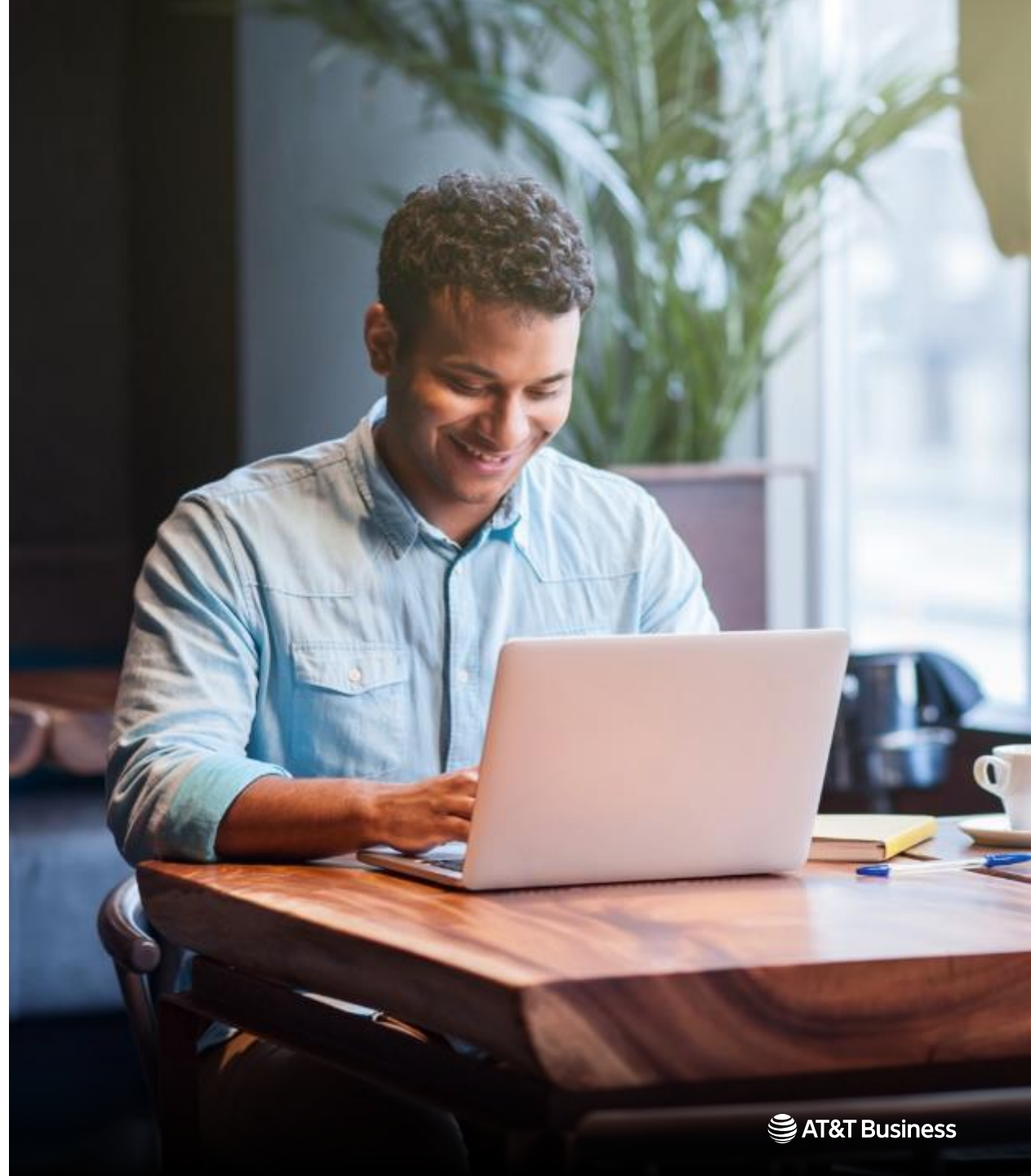


Solutions

- Video intelligence
- Remote patient monitoring
- AT&T staff alert
- Energy and building mgmt.
- Supply chain
- Asset management
- Traffic management
- Microlocation

How can fixed wireless be used with IOT?

- Deliver primary internet to fixed locations such as offices, retail stores, or health clinics
- Provide internet connectivity that extends beyond fiber's footprint
- Offer temporary business locations such as construction site trailers a flexible internet solution
- As a secondary option, fixed wireless can help keep business activity operational when traditional wired connection is interrupted





AT&T Internet Air for Enterprise

Simple setup

Faster installation than cable

Fast, reliable and secure business internet

Includes access to the reliable AT&T 5G network¹
(if available at service address)

Built for business

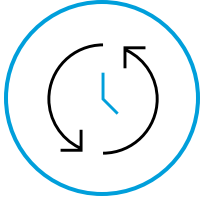
Two plans to choose from – no speed caps, no data caps²

¹ AT&T 5G requires compatible device. Coverage not available everywhere. See att.com/5Gforyou for details.

² Except for the first 250GB of data on the Premium plan, AT&T may temporarily slow data speeds if the network is busy.

© 2024 AT&T Intellectual Property. AT&T and globe logo are registered trademarks and service marks of AT&T Intellectual Property and/or AT&T affiliated companies. All other marks are the property of their respective owners.

Features and benefits



Seamless self-setup

Faster installation than cable



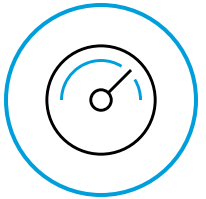
Reliable connectivity

Powered by the reliable AT&T 5G network¹ (if available at service address)



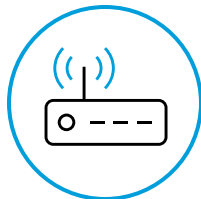
Premium plan option

Higher level of priority for first 250GB of data (after 250GB, AT&T may temporarily slow data speeds if the network is busy)



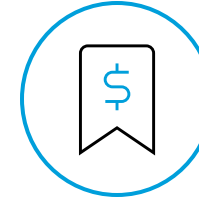
Fast speeds

Our best wireless speeds available at service address



Flexible configuration

Expansive selection of compatible devices (sold separately); supports static IP addressing



Flexible and affordable

Multiple device and rate plan options

¹ AT&T 5G requires compatible device. Coverage not available everywhere. See att.com/5Gforyou for details.

© 2024 AT&T Intellectual Property. AT&T and globe logo are registered trademarks and service marks of AT&T Intellectual Property and/or AT&T affiliated companies. All other marks are the property of their respective owners.

AT&T Internet Air for Enterprise: Ordering

Reliable internet for a low price, with our best wireless speeds at your business locations

- Competitive pricing
- Our best wireless speeds at your business location¹
 - One plan for 5G/5G+ and 4G LTE
- Device flexibility
 - Our newest 5G Gateway for business
 - 5G antenna and Wi-Fi extender
 - Enterprise routers and BYOD
- Premium offering
 - Higher level priority for 250GB of data²

¹ Plans include access to both 4G LTE and 5G/5G+ services, if available at your designated service address. AT&T 5G requires compatible device. Coverage not available everywhere. See att.com/5Gforyou for details.

² **Data Restrictions: Standard plan:** AT&T may temporarily slow data speeds if the network is busy. **Premium plan:** After 250GB, AT&T may temporarily slow data speeds if the network is busy.

³ Availability: Standard plan: Requires a qualified residential or non-residential business service address; **exclusions apply.**

⁴ Availability: Premium plan: Requires a qualified business service address; **not available at residential business locations.**

© 2024 AT&T Intellectual Property. AT&T and globe logo are registered trademarks and service marks of AT&T Intellectual Property and/or AT&T affiliated companies. All other marks are the property of their respective owners.

Step 1

Qualify service address for coverage

Step 2

Purchase a device or accessory or bring your own



5G Gateway



5G antenna



Wi-Fi extender

Step 3

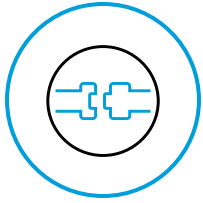
Purchase rate plan

Plan ²	Monthly Rate	Additional Features
AT&T Internet Air for Enterprise Standard ³	\$65	Video management features—helps preserve bandwidth by slowing data recognized as video to Standard Definition (feature can be turned off/back on)
AT&T Internet Air for Enterprise Premium ⁴	\$105	Higher level of priority for first 250GB of data Video Management feature — helps preserve bandwidth by slowing data recognized as video to Standard Definition (feature can be turned off/on)

Fees extra. Plans are eligible for a \$5/mo. discount off the plan charge when enrolled in both Autopay and Paperless Billing. Discount starts w/in 2 bills after enrollment.

AT&T Internet Air for Enterprise | 3 easy steps to get started

Once your service address qualifies, it's quick and easy to get started



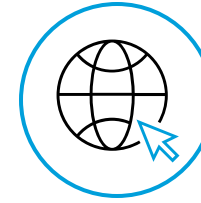
Plug in

Confirm that your AT&T Internet Air for Enterprise SIM is inserted in your device's SIM slot.



Power on

Start up your device and wait for it to fully power on.



Get connected

Follow your device's set up instructions to configure your local network settings and get connected.

Step 1

Step 2

Step 3

Use cases

Primary internet connectivity

Business challenge

- A small startup company needs a cost-effective internet solution
- Requires a quick installation process for internet connectivity

Business benefit

- AT&T Internet Air for Enterprise provides primary internet connectivity at an affordable, predictable cost
- Quick installation time allows the customer to establish internet connectivity in minutes

Flexible internet access for temporary locations

Business challenge

- A construction company needs reliable internet access for a trailer at a large job site that will take many months to complete.
- Customer needs a simple solution with fast connectivity

Business benefit

- AT&T Internet Air for Enterprise provides a quickly-deployable fixed wireless solution, providing reliable fast Internet for the duration of the construction project



Use cases

Secondary internet connection

Business challenge

- A healthcare clinic uses their fiber connection for all their internet needs. Often, there isn't enough bandwidth to meet the demand.
- Seeking a secondary fixed wireless connection to offload the administrative tasks freeing up fiber bandwidth for business-critical applications

Business benefit

- Powered by the reliable AT&T 5G network¹, AT&T Internet Air for Enterprise serves as an ideal solution for a secondary connection
- The clinic can use the fixed wireless connection to balance their data needs

Remote access or lack of fiber connectivity

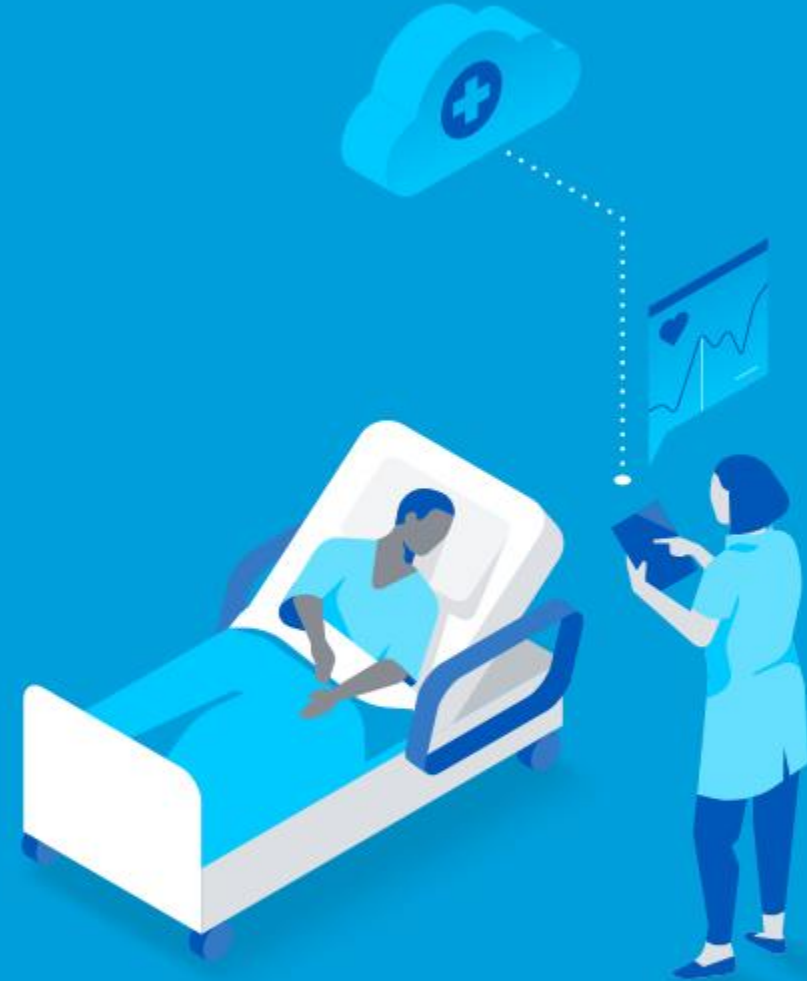
Business challenge

- A growing company requires network support during rapid expansion into new territories that lack fiber connections
- The customer needs reliable internet, quickly

Business benefit

- AT&T Internet Air for Enterprise can provide internet connectivity where a fiber connection may not exist or in rural areas

¹ AT&T 5G/5G+ requires compatible device. Coverage not available everywhere. See att.com/5Gforyou for details.



Information to know

Is AT&T Internet Air for Enterprise available everywhere?

AT&T Internet Air for Enterprise is available in all U.S. markets for qualified service addresses.

Service availability is based on our wireless network signal strength, speed, and capacity at your qualified service address.

What speeds can I expect with AT&T Internet Air for Enterprise?

AT&T Internet Air for Business plans do not have a speed cap¹, which means you can experience our best wireless speeds available at your qualified service locations. Speeds will vary and are not guaranteed. See att.com/broadbandinfo for information on expected speed ranges.

Does AT&T Internet Air for Enterprise support static IP addresses?

Yes. AT&T Internet Air for Enterprise supports static IP addresses at 4G LTE speeds. Static IP offers a non-changing Internet address that makes it easy for your devices and apps to always know where to find the IP address. You can have a unique IP address for each AT&T Internet Air for Enterprise line of service.

Can I take AT&T Internet Air for Enterprise anywhere I go?

No, AT&T Internet Air for Enterprise is a fixed wireless solution. The service is not for mobile use and must only be used at the qualified service address.

Is there equipment included with AT&T Internet Air for Enterprise?

No. A gateway or router is required to use the service, but all devices are sold separately. You can choose from a wide variety of compatible devices or bring your own compatible device.

Are there any usage restrictions for AT&T Internet Air for Enterprise?

There are no data overage charges¹. Plans are not intended for high bit rate applications and may not be used for server devices or host computer applications (such as continuous web camera posts or broadcasts), for high bandwidth applications, services or content that disproportionately and excessively contribute to network congestion (such as web broadcasting).

For full product details, see att.com/AIAEplans

¹Except for the first 250GB of data on the Premium plan, AT&T may temporarily slow data speeds if the network is busy

Why AT&T Business?

Nearly 150 years of connectivity experience.

Reliability

of fiber and 5G

The leading global connectivity provider for next generation networking¹

Largest wireless network in North America²

Security

that starts at the network

Monitoring a daily average of more than 713 PB of data traffic on AT&T global network³

More than 1,000 security-related patents

Experts

who know business

Nearly 2.5 million business customers globally

Invested \$1.1B+ into programs that rapidly restore communications to areas affected by disasters

All content is of 2Q 2024 unless otherwise noted

¹Worldwide leader in Carrier Managed SD-WAN sites. Based on Vertical Systems Group's year-end 2022 Global Provider plus U.S. share results. www.verticalsystems.com

²Based on comparison of carrier owned & operated networks (all cellular platforms combined). No AT&T on-net coverage in select countries, including Canada. Details: <https://www.att.com/international/>. Destinations covered: att.com/globalcountries.

³As of 2Q 2024



AT&T Business

Copyright Notice and Statement of Confidentiality—© 2024 AT&T Intellectual Property. AT&T and globe logo are registered trademarks and service marks of AT&T Intellectual Property and/or AT&T affiliated companies. All other marks are the property of their respective owners. The contents of the Proposal (except for pricing applicable to E-Rate funded services) are unpublished, proprietary, and confidential and may not be copied, disclosed, or used, in whole or in part, without the express written permission of AT&T Intellectual Property or affiliated companies, except to the extent required by law and insofar as is reasonably necessary in order to review and evaluate the information contained herein.